

SKINTEX® SF LEVELS

Product Specifications

Pointe.
International

Application

Upholstery

Content

100% Polyurethane (Polycarbonate Based)

Finish

Patented, Water Based Graffiti-Free®

Backing

100% Polyester

Width

54"

Repeat

N/A

General Characteristics

Abrasion : 500,000+ double rubs (Wyzenbeek)†
Hydrolysis Resistance : 15+ weeks
- ISO 1419-1995, Method C, Tropical Test
Colorfastness to Light (AATCC-16/200 hours)
Meets or exceeds all ACT Heavy Duty Performance
Guidelines for Upholstery

Flammability

CA Bulletin 117-2013, UFAC/NFPA-260
IMO A652 (16) 8.2

Maintenance*

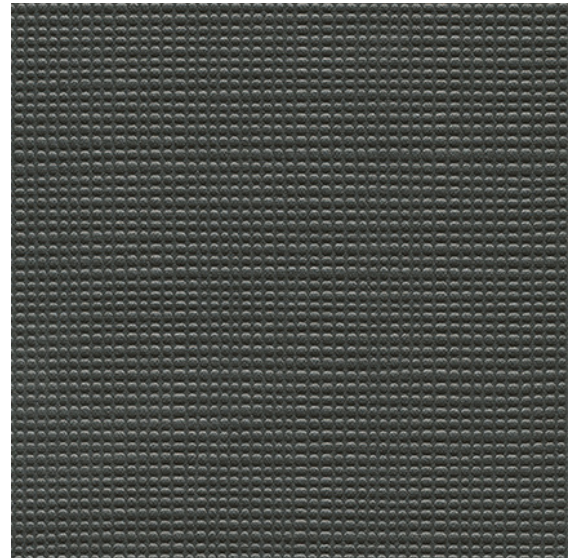
W/S, Bleach Cleanable (4:1)

Environmental

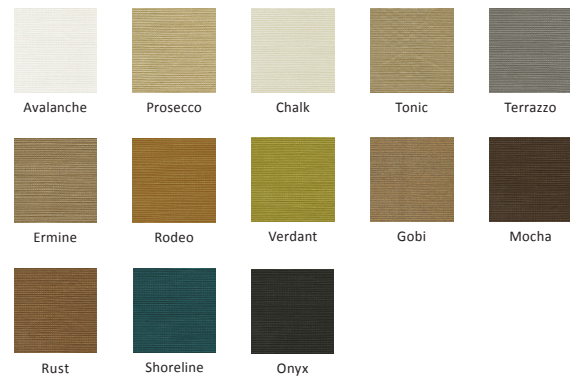
DMF Free, PVC/Phthalates Free, FR/Anti-Microbial Free
*Complies with REACH, Prop 65, HHI, CAL 01350

Warranty

Please refer to our Terms of Sales for warranty information.



Twilight



*While this product offers excellent protection against ink marks or difficult stains, full removal is not always guaranteed, if stains not addressed promptly.

† Multiple factors affect fabric durability and appearance retention, including end-user application and proper maintenance. Wyzenbeek results above 100,000 double rubs have not been shown to be a reliable indicator of increased fabric lifespan.